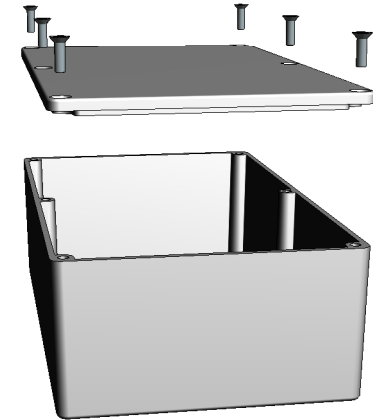
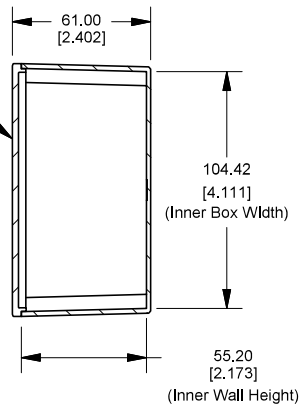
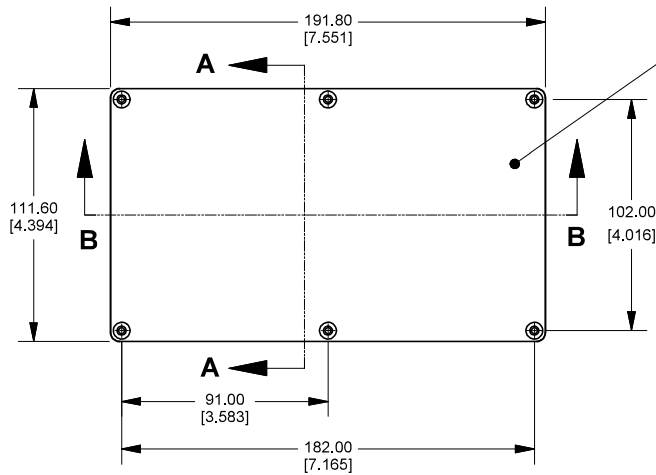
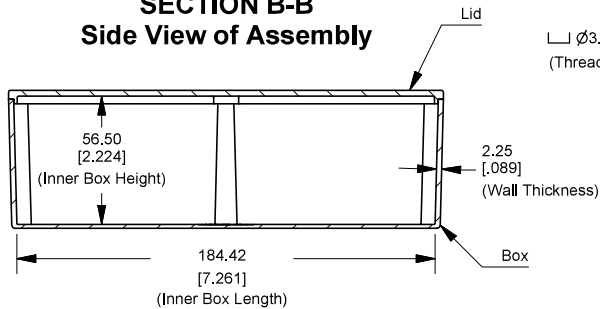
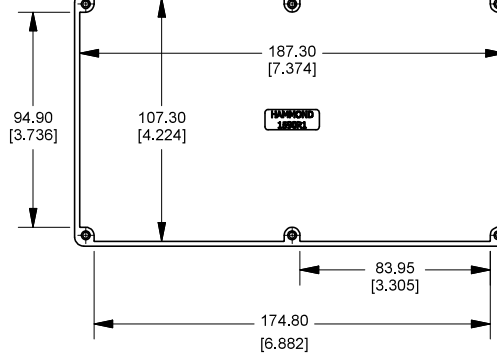
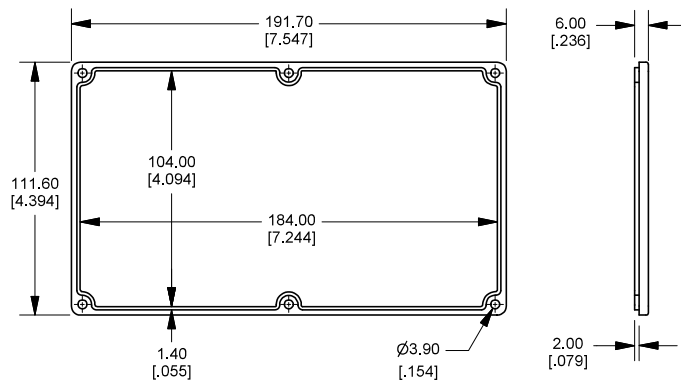



Top View of Assembly
**SECTION A-A
End View of Assembly**

**SECTION B-B
Side View of Assembly**
Top View Looking Inside Box


6-32 UNC
 \perp $\varnothing 3.90 \pm 3.00$
 (Threaded Holes)


Lid


Enclosures can be Factory Modified (Milling, Drilling, Printing etc.)
 Contact Factory mjm@hammondmfg.com for quotes
 Solid models of this enclosure available in STEP or IGES.

NOTE

Purchased assembly includes box, lid and 6 cover screws.
 Box and lid are made from Diecast Aluminum Alloy.
 Silicone Gasket supplied with liquid resistant enclosure.

PART NUMBERS

1590R1 Enclosure	
Natural Finish Enclosure	1590R1
Black Textured Enclosure	1590R1BK
1590R1 Liquid Resistant Enclosure (Silicone Gasket)	
Natural Finish Enclosure	1590WR1
Black Textured Enclosure	1590WR1BK

ACCESSORIES

Recommended Torque: 75 ozf.in / 55 cN.m

Liquid Resistant Cover Screws

Stainless Steel Cover Screws (Pkg 100) [6-32 x 1/2" With O-Ring]	1590WMS100
Black Stainless Steel Cover Screws (Pkg 100) [6-32 x 1/2" With O-Ring]	1590WMS100BK

Standard Cover Screws

Plated Cover Screws (Pkg 100) [6-32 x 1/2"]	1590MS100
Black Cover Screws (Pkg 100) [6-32 x 1/2"]	1590MS100BK

Dimensions:
 mm
 [inches]

**HAMMOND
 MANUFACTURING™**
1590R1
www.hammondmfg.com

