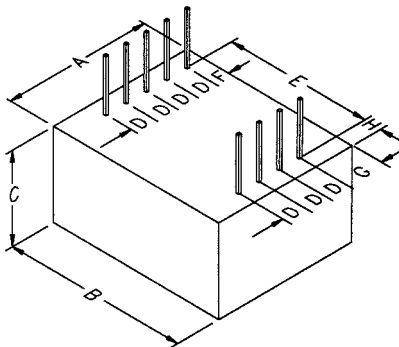
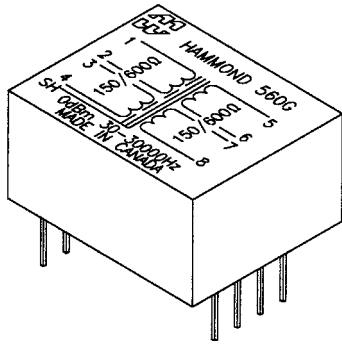


P.C. BOARD MOUNT - EPOXY POTTED AUDIO TRANSFORMERS

- Rugged black epoxy potted case with 9 pin connections (.025" square by 0.5" long).
- Frequency response @ 0 dbm +/- 1 db max. (+/- 0.5 db is typical) of 30 Hz. to 30 KHz., except 560Q which is 30 Hz. to 15 KHz.
- Insertion loss of 1 db max.
- Maximum power level 0 dbm.
- Electrostatic shield between primary & secondary connected to core and pin "SH".
- Humbucking construction
- Balanced split windings on primary & secondary for circuit versatility.
- Primaries and secondaries can be reversed for impedance matching.
- Overall dimensions 1.64" x 1.33" x 0.85" high max.
- Shipping weight 4 oz.

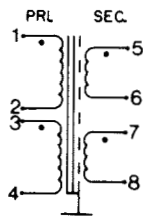
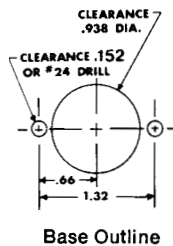


| Part No. | Application | Nominal Impedance | |
|----------|-----------------------------------|-------------------|-----------|
| | | Primary | Secondary |
| 560C | Emitter or mic to Line | 12/48 | 150/600 |
| 560E | Emitter or mic to Line | 50/200 | 150/600 |
| 560G | Isolating or Hybrid | 150/600 | 150/600 |
| 560J | Collector to Line or Line to Base | 150/600 | 1200/4800 |
| 560L | Collector to Line or Matching | 150/600 | 5K/20K |
| 560N | Collector to Line | 150/600 | 10K/40K |
| 560Q | Matching or Bridging | 10k/40k | 10K/40K |

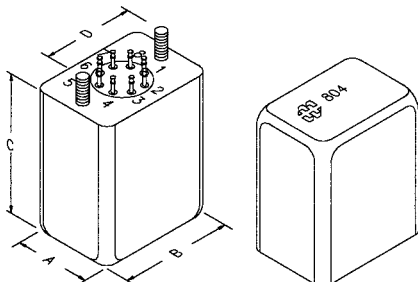
| Dimensions (Inches) | | | | | | | |
|---------------------|------|--------------|------|------|-------|-------|-------|
| A | B | C | D | E | F | G | H |
| 1.33 | 1.64 | 0.85 Max. | 0.20 | 1.30 | 0.141 | 0.344 | 0.156 |

Audio

CHASSIS MOUNT - HERMETICALLY SEALED AUDIO TRANSFORMERS



- Deep-drawn steel case with tin plated finish, with two convenient 6-32 mounting studs with hardware.
- Hermetically sealed for stable characteristics and long life. Header has nine 0.22" long solder pins.
- Frequency response +/- 0.5 db max. from 50 Hz. to 15 KHz.
- Insertion loss of apx. 1 db.
- Maximum power level +15 dbm. (except 841, 842 & 844 which are +20 dbm) with specified characteristics, or higher levels with reduced low frequency performance.
- Electrostatic shield between primary & secondary connected to terminal 9.
- Humbucking construction
- Balanced split windings on primary & secondary for circuit versatility. Primary may be used as a secondary and vice versa for impedance matching.
- Overall dimensions 1.75" wide x 1.25" deep x 2.56" high max.
- Shipping weight 0.5 lb.



CANADA
Guelph, Ontario (519) 822-2960
St. Laurent, Quebec (514) 343-9010
USA
Cheektowaga, NY (716) 630-7030

www.hammondmfg.com



EUROPE
Basingstoke, UK 01256 812812

AUSTRALIA
Queenstown, Australia 61-8-8240-2244

CHASSIS MOUNT - HERMETICALLY SEALED AUDIO TRANSFORMERS (continued)

| Part No. | Application | Nominal Impedance | | Max. Pri. D.C. Unbalanced ma |
|----------|-------------------------------------|--------------------|---------------------|------------------------------|
| | | Primary | Secondary | |
| 801 | Isolating, Matching | *50/200 | 50/200 | 0.8 |
| 802 | Isolating, Matching | *50/200 (60/240) | 125/500 (150/600) | 0.8 |
| 804 | Isolating, Matching, Hybrid | *125/500 (150/600) | 125/500 (150/600) | 0.5 |
| 806 | Dynamic MIC or Voice Coil to Grid | *7.5/30 | 10K/40K | 1.6 |
| 807 | Dynamic MIC or Voice Coil to Base | *7.5/30 | 600/2400 | 1.6 |
| 808 | MIC or Mixer to Single or P.P. Grid | *50/200 | 10000/40000 | 0.6 |
| 809 | MIC to Mixer to Base | *50/200 | 600/2400 | 0.6 |
| 812 | Line or 150 ohm MIC to 1 or 2 grids | *125/500 (150/600) | 10K/40K (12K/48K) | 0.4 |
| 813 | Line or 150 ohm MIC to Base | *125/500 (150/600) | 600/2400 (720/2880) | 0.4 |
| 832 | Interstage (ratio 1:2) | 5K/20K | 20K/80K | 0 |
| 834 | Interstage (ratio 1:4) | 5K/20K | 10K/40K | 0 |
| 835 | Interstage (ratio 1:1) | 10K/40K | 10K/40K | 0 |
| 841 | ** P.P. Plates to Line | 5K/20K | 50/200 | 0 |
| 842 | ** P.P. Plates to Line | 5K/20K (6K/24K) | 125/500 (150/600) | 0 |
| 844 | ** P.P. Plates to Line | 10K/40K (12K/48K) | 125/500 (150/600) | 0 |

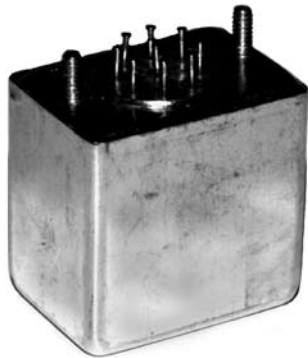
NOTES:

* Electrostatic shield between primary & secondary

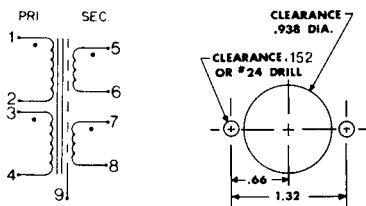
** Single plate requires parallel feed. When operating at impedances below nominal, power capability is lower and the frequency spectrum is shifted downward, conversely, at higher impedances power capability and frequency spectrum will be shifted upward.

Audio

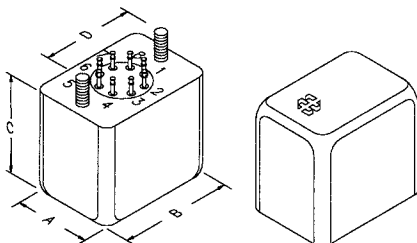
CHASSIS MOUNT - HERMETICALLY SEALED AUDIO TRANSFORMERS



- Deep-drawn steel case with tin plated finish, with two convenient 6-32 mounting studs with hardware (same as 800 series except low profile).
- Hermetically sealed for stable characteristics and long life. Header has nine 0.22" long solder terminals.
- Frequency response +/- 0.5 db max. from 20 Hz. to 20 Khz., except units over 5K ohms impedance, may be down 1 db @ 20 Khz.
- Insertion loss of apx. 1 db.
- Maximum power level +15 dbm. with specified characteristics, or higher levels with reduced low frequency performance.
- Distortion is apx. 1.5% @ 20 Hz. under full power.
- Electrostatic shield between primary & secondary connected to terminal 9.
- Humbucking construction
- Balanced split windings on primary & secondary for circuit versatility. Primary may be used as a secondary and vice versa for impedance matching.
- Overall dimensions 1.7" x 1.2" x 1.65" high max.
- Shipping weight 0.4 lb.



Base Outline



| Part No. | Application | Nominal Impedance | | Nominal Resistance +/- 20% | |
|----------|--|-------------------|-----------|----------------------------|-----------|
| | | Primary | Secondary | Primary | Secondary |
| 850C | Emitter or MIC to Line | 12/48 | 150/600 | 6 | 70 |
| 850E | Emitter or MIC to Line | 50/200 | 150/600 | 27 | 68 |
| 850G | Line Isolation or Hybrid | 150/600 | 150/600 | 71 | 71 |
| 850H | Line Isolation or Hybrid | 150/600 | 300/1200 | 70 | 140 |
| 850J | Output to Line, or Line to Base | 150/600 | 1200/4800 | 69 | 570 |
| 850L | Output to Line, Matching or Bridging | 5K/20K | 150/600 | 2240 | 69 |
| 850N | Output to Line, Matching or Interstage | 150/600 | 10K/40K | 65 | 4980 |
| 850Q | Interstage or Isolating | 10K/40K | 10K/40K | 4890 | 4980 |

EUROPE

Basingstoke, UK 01256 812812

AUSTRALIA

Queenstown, Australia 61-8-8240-2244

www.hammondmfg.com



CANADA

Guelph, Ontario (519) 822-2960
St. Laurent, Quebec (514) 343-9010

USA

Cheektowaga, NY (716) 630-7030

